



HAM-LET RUBBER HOSES



HAM-LET HOSES

METAL | PTFE | RUBBER | NYLON |
PFA | COMPONENTS | EXPANSION JOINTS

HAM-LET Rubber Hoses

General

HAM-LET RHG rubber hoses are designed for pneumatic and hydraulic applications, automotive industry, shop air systems and general industrial maintenance.

No silicone is used during hose production.

RHG Hoses are to be used with HAM-LET HOSE END™ connectors.

* For HAM-LET HOSE END™ variety, see HAM-LET catalog, page 119-121.

Testing & Packing

All Hose assemblies are Hydrostatically tested to 1.5xMWP, 450 psi (31 bar).

All Hose assemblies are packed individually in a plastic bag, end connections are capped.

Features

- RUBBER core with all stainless steel or brass end connections assemblies per EN 16643:2016
- Available in 6 colors: Black, Blue, Red, Green, Grey and Yellow
- Easy to clean, drains easily
- True I.D.
- LET-LOK®, ONE-LOK®, NPT, BSPT, BSPP and SAE 37° Flare end connections
- ID Sizes: ¼" up to 1"
- Minimum bend radius 2.56 inch (65mm)
- Max. pressure 300 psi (20.7 bar), safety factor 1 to 4
- Working temperature: -40° ~ +190° F (-40° ~ + 88°C)
- Inner tube oil & heat resistant synthetic rubber (RMA Class A high oil resistance)
- Cover weather, abrasion & oil resistant Nitrile synthetic rubber (RMA Class B medium-high oil resistance)
- External layer has excellent abrasion, weather condition and oil resistance. Flame resistance meets MSHA 2G-14C/14 standards.
- Nonconductive (R > 1MΩ/inch at 1000 V DC)

RHG Series - Smooth Rubber Core Synthetic Braided Hose

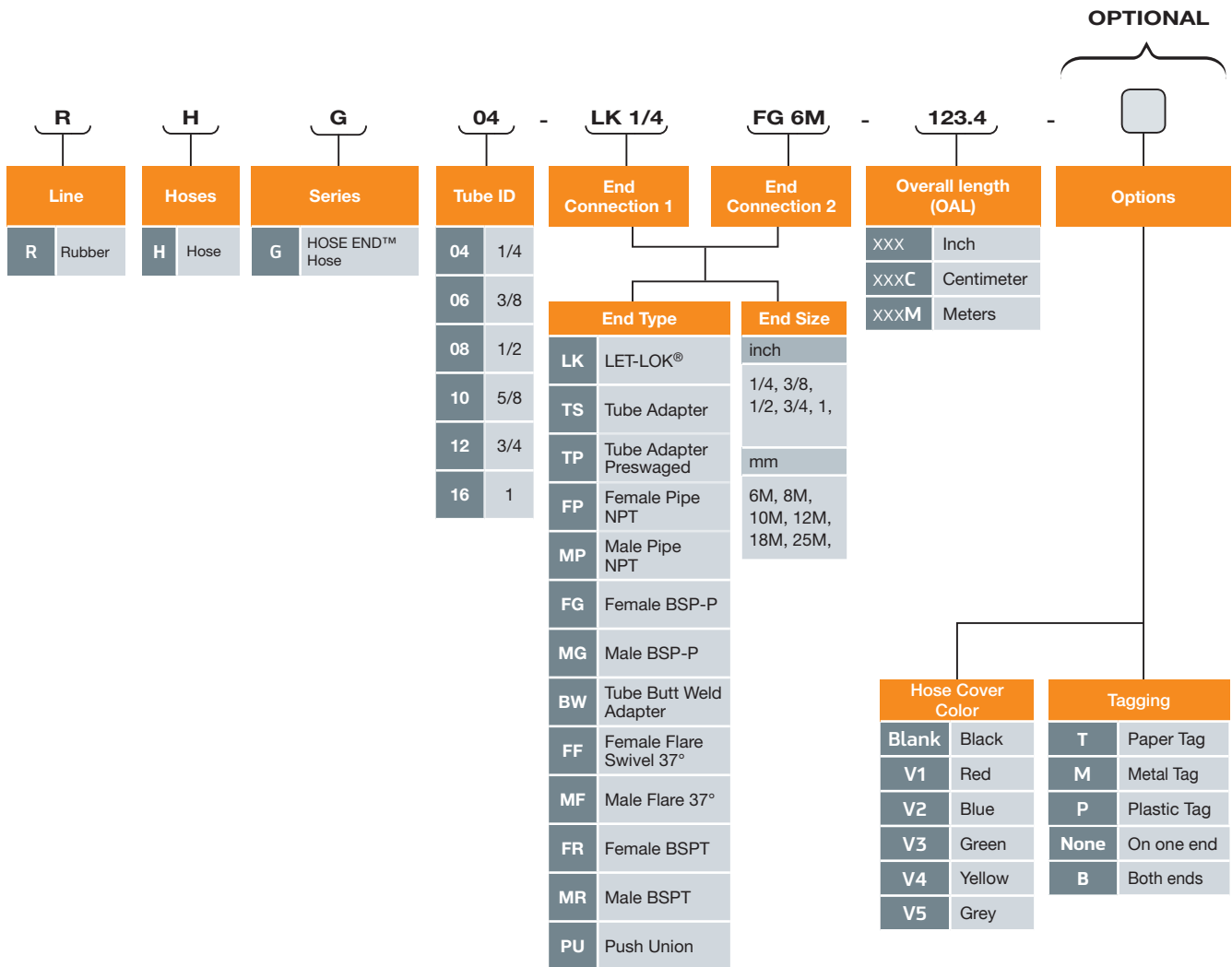
Inside Diameter		Maximum Working Pressure		Minimum Bend Radius		Outside Diameter		Burst Pressure		Weight Per Foot	Weight Per Meter
(inch)	(mm)	(psi)	(bar)	(inch)	(mm)	(inch)	(mm)	(psi)	(bar)	(lbs)	(kg)
1/4	6.35	300	20.7	2.56	65	0.54	13.7	1200	82.7	0.09	0.13
3/8	9.53	300	20.7	2.95	75	0.69	17.5	1200	82.7	0.14	0.21
1/2	12.7	300	20.7	5.12	130	0.81	20.6	1200	82.7	0.17	0.25
5/8	15.88	300	20.7	5.91	150	0.93	23.6	1200	82.7	0.20	0.30
3/4	19.05	300	20.7	7.09	180	1.07	27.2	1200	82.7	0.26	0.39
1	25.4	300	20.7	8.0	203	1.34	34.0	1200	82.7	0.34	0.51



Materials of Construction

Part	Material
Tube	Rubber
Braid	Single fiber braid
External Cover	Nitrile synthetic rubber
End Connections	SS 316L / Brass

RUBBER HOSE ASSEMBLIES - Ordering Information



* note

* For POP geometry add "P" before End type
Example: RHG04-PLK1/4PMP1/4-123.4

Warning!

The system designer and user have the sole responsibility for selecting products suitable for their special application requirements, ensuring their safe and trouble-free installation, operation, and maintenance. Application details, material compatibility and product ratings should all be considered for each selected product. Improper selection, installation or use of products can cause property damage or personal injury.

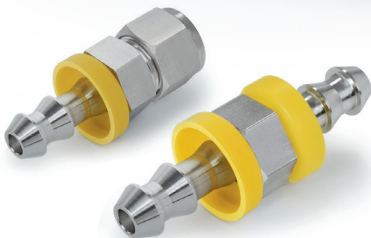
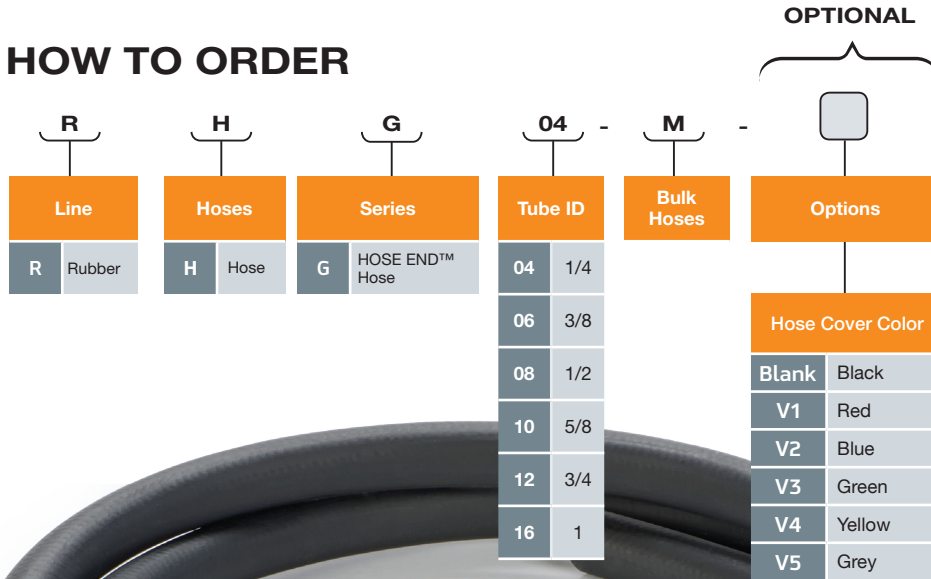
RUBBER HOSES COMPONENTS

BULK RUBBER HOSES

Available for ordering as:

- cut length up to 150 feet (50 meter)
- Reel of fix length 500 feet (152.4 meter) for all sizes (maximum 4 pieces in a reel, 10' minimum)

HOW TO ORDER



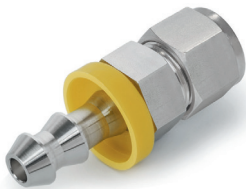
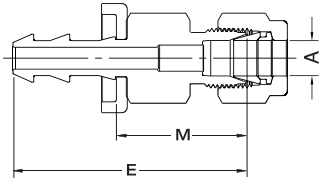
For a complete range of end connections see the following pages, or the Ham-Let catalogue.

Warning!

The system designer and user have the sole responsibility for selecting products suitable for their special application requirements, ensuring their safe and trouble-free installation, operation, and maintenance. Application details, material compatibility and product ratings should all be considered for each selected product. Improper selection, installation or use of products can cause property damage or personal injury.

HAM-LET RUBBER HOSES COMPONENTS | FITTINGS

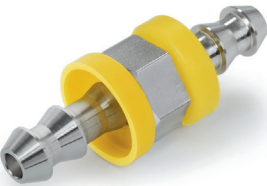
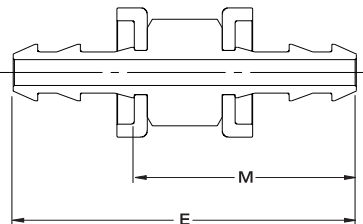
LET-LOK® TUBE FITTINGS 130 LHPO / 130 LHPOP



Ordering Information	Hose I.D.	A Tube O.D.	E		M		
			inch	mm	inch	mm	
PO INCH							
130LHPO _ 1/4 X 1/4	1/4	1/4	1.97	42.67	1.14	23.92	
130LHPO _ 3/8 X 3/8	3/8	3/8	2.11	46.22	1.17	24.52	
130LHPO _ 1/2 X 1/2	1/2	1/2	2.47	52.58	1.37	26.68	
130LHPO _ 3/4 X 3/4	3/4	3/4	2.96	65.05	1.32	23.3	
130LHPO _ 1 X 1	1	1	3.01	64.36	1.6	28.36	
PO INCH TO MM							
130LHPO _ 1/4 X 6MM	1/4	6mm	1.97	10.64	1.14	6.16	
130LHPO _ 1/4 X 8MM	1/4	8mm	1.97	10.64	1.14	6.16	
130LHPO _ 3/8 X 6MM	3/8	8mm					
130LHPO _ 3/8 X 8MM	3/8	10mm					
130LHPO _ 1/2 X 12MM	1/2	12mm	2.47	13.34	1.45	7.83	
130LHPO _ 3/4 X 18MM	3/4	18mm					
130LHPO _ 1 X 25MM	1	25mm					

Ordering Information	Hose I.D.	A Tube O.D.	E		M		
			inch	mm	inch	mm	
POP INCH							
130LHPOP _ 1/4 X 1/4	1/4	1/4	1.43	36.20	0.70	17.70	
130LHPOP _ 3/8 X 3/4	3/8	3/4	2.38	60.50	0.97	24.60	
130LHPOP _ 3/4 X 3/4	3/4	3/4	2.39	60.65	0.97	24.65	

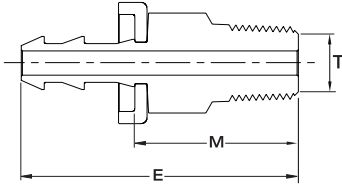
UNIONS 132 PO



Ordering Information	Hose I.D.	Hose I.D.	E		M		
			inch	mm	inch	mm	
PO							
132PO _ 1/4 X 1/4	1/4	1/4	2.07	52.6	1.33	33.85	
132PO _ 3/8 X 3/8	3/8	3/8	2.25	57.2	1.4	35.5	
132PO _ 1/2 X 1/2	1/2	1/2	2.61	66.3	1.59	40.4	
132PO _ 3/4 X 3/4	3/4	3/4	3.82	97.1	2.18	55.35	
132PO _ 1 X 1	1	1	3.57	90.8	2.16	54.8	

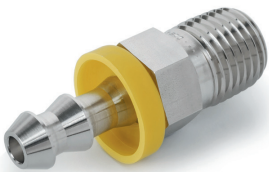
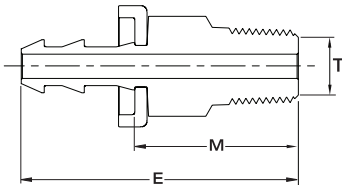
HAM-LET RUBBER HOSES COMPONENTS | FITTINGS

MALE PIPE THREADS 130 HMPO / 130 HMPOP



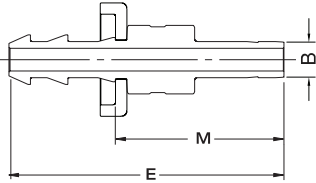
Ordering Information	Hose I.D.	T NPT	E		M		
			inch	mm	inch	mm	
PO NPT							
130HMPO _ 1/4 X 1/4	1/4	1/4	1.68	42.7	0.94	23.95	
130HMPO _ 1/4 X 3/8	1/4	3/8	1.69	43.0	0.95	24.25	
130HMPO _ 3/8 X 1/4	3/8	1/4	1.80	45.7	0.94	24.0	
130HMPO _ 3/8 X 3/8	3/8	3/8	1.80	45.7	0.94	24.0	
130HMPO _ 3/8 X 1/2	3/8	1/2	2.02	51.2	1.16	29.5	
130HMPO _ 1/2 X 3/8	1/2	3/8	2.02	51.34	1.0	25.44	
130HMPO _ 1/2 X 1/2	1/2	1/2	2.19	55.6	1.17	29.7	
130HMPO _ 1/2 X 3/4	1/2	3/4	2.21	56.14	1.19	30.24	
130HMPO _ 3/4 X 1/2	3/4	1/2	2.81	71.4	1.17	29.65	
130HMPO _ 3/4 X 3/4	3/4	3/4	2.81	71.4	1.17	29.65	
130HMPO _ 1 X 1	1	1	2.99	76.06	1.58	40.06	
POP NPT							
130HMPOP _ 1/4X1/4	1/4	1/4	1.57	40.1	0.82	21.6	
130HMPOP _ 1/4X1/2	1/4	1/2	1.9	48.3	1.17	29.8	
130HMPOP _ 3/8X1/4	3/8	1/4	1.78	45.0	0.88	22.75	
130HMPOP _ 3/8X3/8	3/8	3/8	1.78	45.3	0.9	23.05	
130HMPOP _ 1/2X3/8	1/2	3/8	1.93	49.0	0.9	22.9	
130HMPOP _ 1/2X1/2	1/2	1/2	2.18	55.5	1.16	29.4	
130HMPOP _ 1/2X3/4	1/2	3/4	2.23	56.6	1.2	30.5	
130HMPOP _ 3/4X1/2	3/4	1/2	2.61	66.4	1.2	30.5	
130HMPOP _ 3/4X3/4	3/4	3/4	2.61	66.4	1.2	30.5	
130HMPOP _ 1 X 1	1	1	3.06	78.0	1.66	42.1	

MALE PIPE THREADS 130 HMRPO / 130 HMRPOP



Ordering Information	Hose I.D.	T ISO	E		M		
			inch	mm	inch	mm	
BSP Tapered							
130HMRPO _ 3/8 X 3/8	3/8	3/8	1.8	45.7	0.94	24.0	
130HMRPO _ 1/2 X 1/2	1/2	1/2	2.19	55.6	1.17	29.7	
130HMRPO _ 3/4 X 1/2	3/4	1/2	2.81	71.4	1.17	29.65	
130HMRPO _ 3/4 X 3/4	3/4	3/4	2.81	71.4	1.17	29.65	

TUBE ADAPTER 131 PO / 131 POP



Ordering Information	Hose I.D.	B Tube O.D.	E		M	
			inch	mm	inch	mm
PO INCH						
131PO _ 1/4 X 1/4	1/4	1/4	1.91	48.5	1.17	29.75
131PO _ 3/8 X 1/4	3/8	1/4	1.95	49.6	1.10	27.9
131PO _ 3/8 X 3/8	3/8	3/8	2.02	51.3	1.17	29.6
131PO _ 1/2 X 3/8	1/2	3/8	2.25	57.14	1.23	31.24
131PO _ 1/2 X 1/2	1/2	1/2	2.47	62.74	1.45	36.84
131PO _ 3/4 X 1/2	3/4	1/2	3.04	77.1	1.39	35.35
131PO _ 3/4 X 3/4	3/4	3/4	3.14	79.8	1.50	38.05
131PO _ 1 X 3/4	1	3/4	3.06	77.7	1.64	41.7
131PO _ 1 X 1	1	1	3.39	86.0	1.97	50.0
PO MM						
131PO _ 1/4 X 8MM	1/4	8mm	1.52	49.6	1.21	30.85
131PO _ 3/8 X 8 MM	3/8	8mm	2.0	50.9	1.15	29.2
131PO _ 3/8 X 12MM	3/8	12mm	2.24	56.9	1.39	35.2
131PO _ 1/2 X 12MM	1/2	12mm	2.47	62.74	1.45	36.48
131PO _ 3/4 X 18MM	3/4	18mm	3.14	79.8	1.50	38.05

Ordering Information	Hose I.D.	B Tube O.D.	E		M	
			inch	mm	inch	mm
POP INCH						
131POP _ 1/4 X 1/4	1/4	1/4	1.89	48.0	1.17	29.65
131POP _ 1/4 X 3/16	1/4	3/16	1.63	41.5	0.91	23.15

NOTE: For other end connection styles and sizes please contact your local Ham-Let representative.

**HAM-LET USA**

12565 West Airport Blvd.
Sugar Land, Texas 77478
Tel: +1 281 5664900
Fax: +1 281 5664910
Mail: usa@ham-let.com

HAM-LET CANADA

3190 Ridgeway Drive, Unit
33 Mississauga, Ontario,
L5L 5S8
Tel: +1 905 6089996
Fax: +1 905 6088661
Mail: canada@ham-let.com

HAM-LET GERMANY

Dornacher Strasse 3a,
D-85622 Feldkirchen
Tel: +49 89 90778060
Fax: +49 89 90778070
e-mail: gmbh@ham-let.com

HAM-LET UK

Unit 1, Lindfield Enterprise
Park Lewes Road, Lindfield
Haywards Heath,
West Sussex RH16 2LH
Tel: +44 1444 487555
Fax: +44 1444 487666
Mail: uk@ham-let.com

HAM-LET FRANCE

Siège Social: PARK AVENIR,
Zone de Sacuny, Avenue
Marcel MERIEUX, bâtiment B7,
69530, BRIGNAIS
Tel: +33 4 78950342
Fax: +33 4 72310576

HAM-LET BENELUX B.V.

Industrieweg 30, 7944
HS, Meppel, The Netherlands
Tel: +31 522237049
Fax: +31 522237040
Mail: benelux@ham-let.com

HAM-LET RUSSIA

Industrieweg 30, 7944
HS, Meppel, The Netherlands
Tel: +31 522237049
Fax: +31 522237040
Mail: benelux@ham-let.com

HAM-LET SINGAPORE

61 Bukit Batok Crescent
#02-01 & #02-02
Heng Loong Building,
Singapore 658078
Tel: +65 62578313
Fax: +65 62578315
Mail: singapore@ham-let.com

HAM-LET MOTOYAMA JAPAN (HMJ)

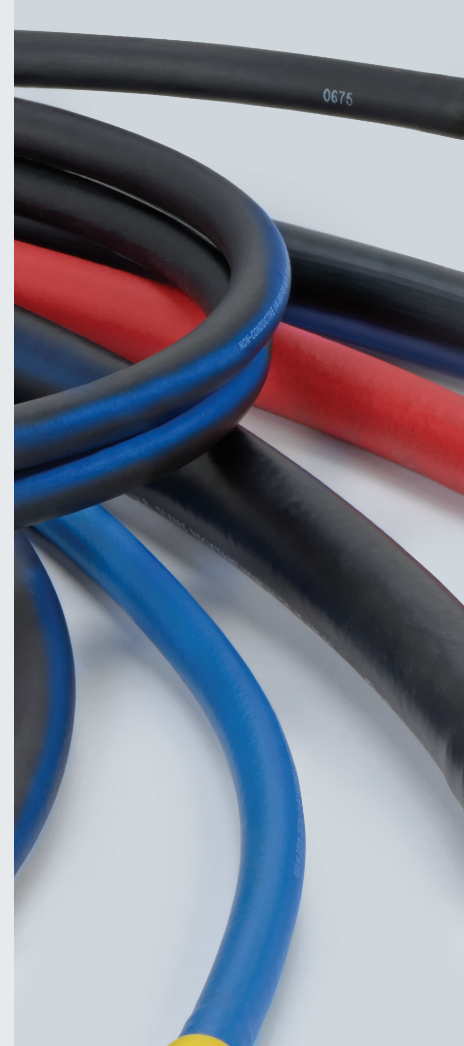
TSI Hakozaki Bldg. 4F,
20-5, Hakozaki-cho, Nihonbashi,
Chuo-ku, Tokyo, 103-0015
Tel: +81 3 36685321
Fax: +81 3 36647027
Mail: hmj@ham-let.com

HAM-LET CHINA

Economic Development Zone
Yanzhong City, Jiangsu
Province China
Tel. +86-511-88453746
Fax +86-511-88451005
Mail: jsxh@xhchina.cn
www.xhchina.cn/lxwm.html

HAM-LET NORWAY

Postboks 115, N-5346 Ågotnes
Bleivassveien 28, Ågotnes.
Tel. 47-56 31 54 50
Mail: info@norvalves.no
www.www.norvalves.no



www.ham-let.com



This document is proprietary to HAM-LET Group and may not be copied, duplicated or used without the permission of HAM-LET Group. HAM-LET Group reserves the right to make changes to any portion of this document at any time without notice. The information furnished by HAM-LET Group in this document is believed to be accurate and reliable. However, HAM-LET Group assumes no responsibility for its use or for errors or omissions. All company and brand products are trademarks or registered trademarks of their respective holders.