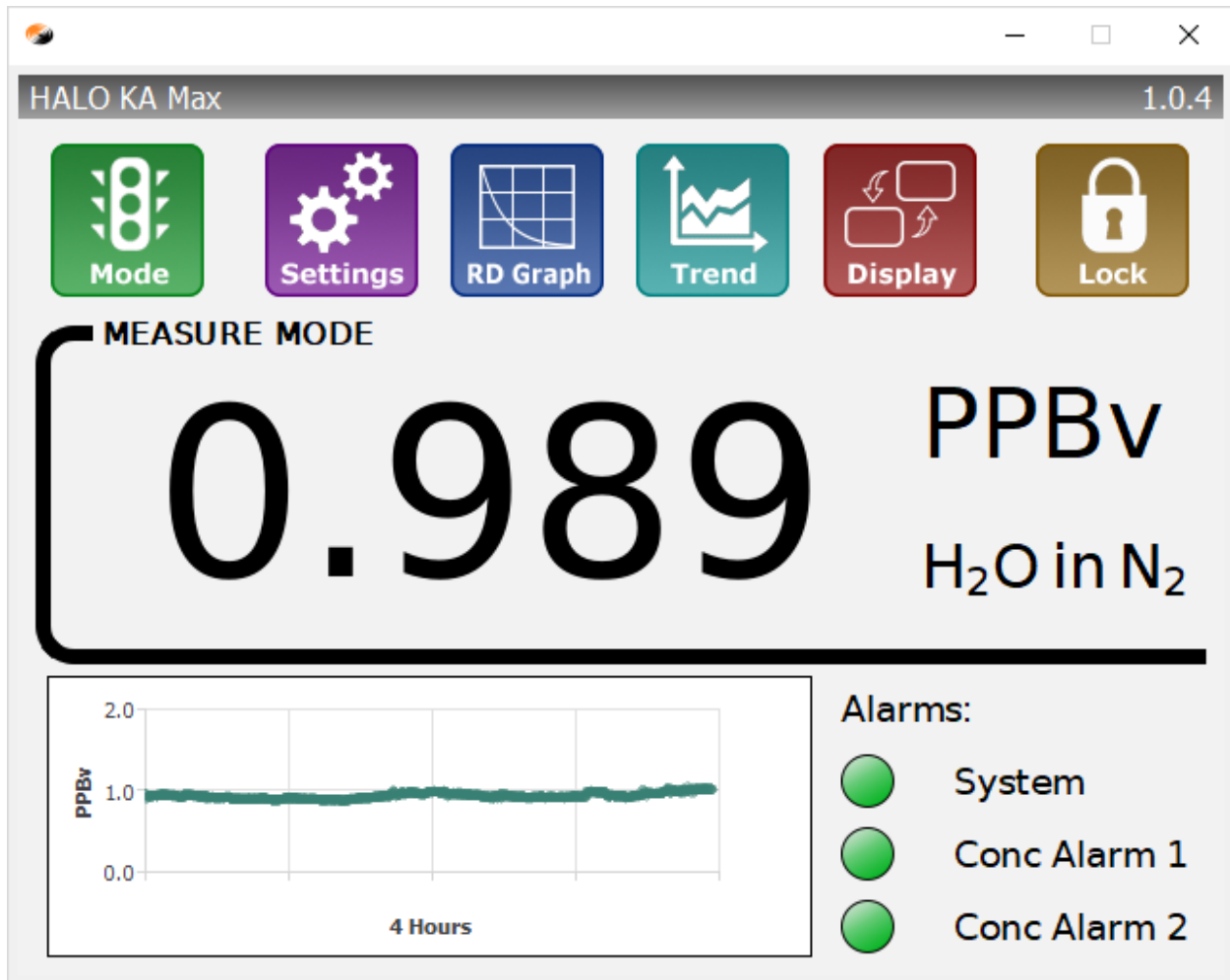


Serani™ Max



Quick Start Guide

Rev A

1 CONTENTS

2	Requirements	3
2.1	Licensing	3
2.2	Computer.....	3
3	Installation.....	4
3.1	Obtaining the installer	4
3.2	Installing the software	4
4	Using Serani Max.....	5
4.1	Starting	5
4.2	Create new analyzer connection	6
4.3	Edit existing analyzer connection	6
4.4	Delete existing analyzer connection.....	6
4.5	Connect to analyzer	7
4.5.1	Downloaded Files	7
4.5.2	Uploading analyzer settings	7
4.5.3	Communication Errors	7
4.5.4	License Validation Errors	8

2 REQUIREMENTS

2.1 LICENSING

A license for the Serani Max software must be purchased from Tiger Optics and is tied to the serial number of an analyzer. The Serani Max software can be installed on multiple computers and the same license can be used on multiple installations. Any of these computers will be able to connect to the analyzer for which the license was obtained. One Serani Max installation can also have multiple licenses to connect to multiple analyzers.

2.2 COMPUTER

Operating System:	Microsoft Windows 7, 8, or 10
CPU:	1 GHz or faster recommended
Memory:	1 GB or more
Hard Drive Space:	100 MB for the software; Additional space required for saving analyzer data
Network Connection:	Required to communicate with analyzer

3 INSTALLATION

3.1 OBTAINING THE INSTALLER

The Serani Max software installer can be downloaded from the Tiger Optics website (tigeroptics.com).

3.2 INSTALLING THE SOFTWARE

Double-click on the installer executable to begin installation. During installation, you must agree to the terms of the license.

4 USING SERANI MAX

4.1 STARTING

Start Serani Max by clicking on Windows Start button, then click on the Serani Max icon located in the Tiger Optics folder.

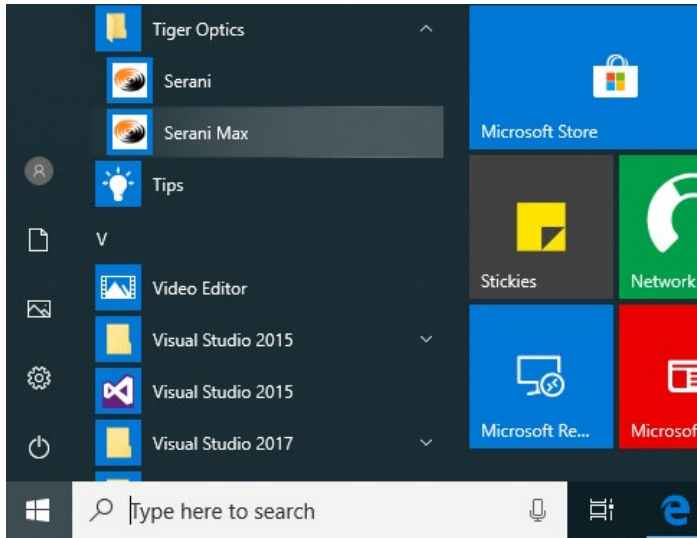


Figure 1: Start Serani Max

When Serani Max starts, you will be presented with the main window of the application.

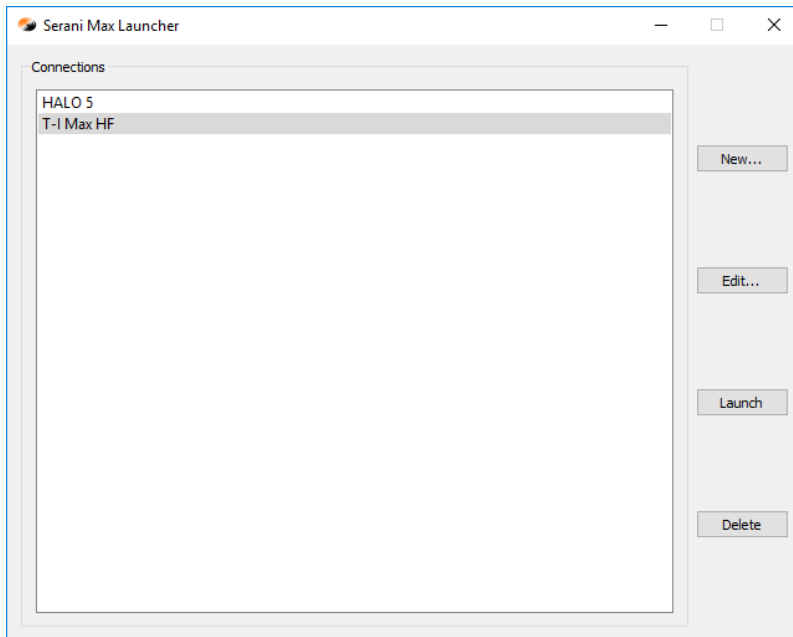


Figure 2: Serani Max Main Application Window

4.2 CREATE NEW ANALYZER CONNECTION

Before you can use Serani Max to communicate with an analyzer, you must create a new connection.

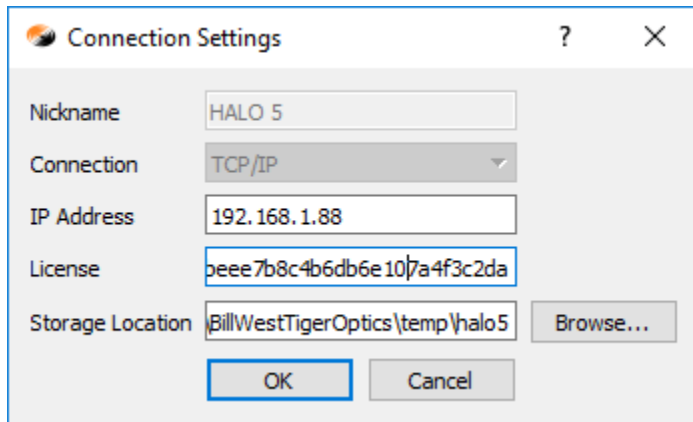


Figure 3: Connection Settings Window

To create a new connection:

1. Click on the **New...** button (the Connection Settings window will be displayed) in the main application window.
2. Enter a nickname for the analyzer.
3. Enter the IP address of the analyzer.
4. Enter the license for the analyzer.
5. Specify the storage location for files downloaded from the analyzer by clicking on the **Browse...** button (optional).
6. Click the **OK** button (the nickname of the connection will now be displayed in the main application window).

4.3 EDIT EXISTING ANALYZER CONNECTION

There may come a point in time where the analyzer IP address changes or the storage location on your PC for a connection needs to change. To modify the analyzer IP address or storage location, you need to edit the connection.

To edit an existing connection:

1. Click on the nickname of an existing connection in the main application window.
2. Click on the **Edit...** button (the Connection Settings window will be displayed).
3. Edit the IP address or storage location of the connection as desired.
4. Click on the **OK** button to save your changes.

4.4 DELETE EXISTING ANALYZER CONNECTION

If you have an analyzer connection that you no longer use, you can delete its information from Serani Max.

To delete an existing connection:

1. Click on the nickname of an existing connection in the main application window.
2. Click on the **Delete** button.

4.5 CONNECT TO ANALYZER

To connect to an analyzer, double-click on a connection in the main application window or select a connection in the main application window and click the **Launch** button.

If the connection is successful, you will see the main window of the analyzer GUI on your desktop:

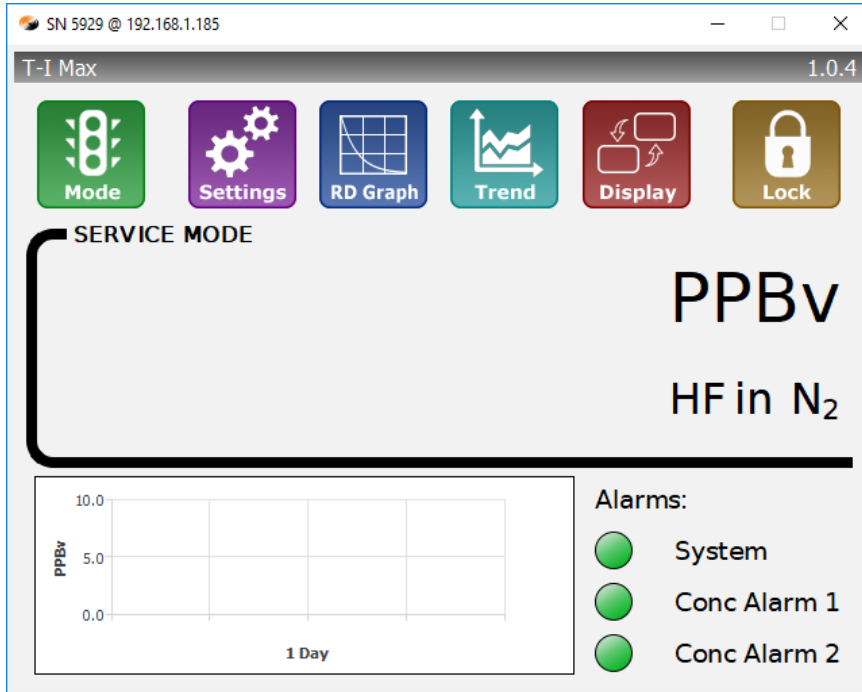


Figure 4: Main Window Analyzer GUI

4.5.1 Downloaded Files

All files downloaded from the analyzer (trend history, analyzer settings) will be stored in the location specified when creating the connection to the analyzer.

The default storage location is the user's home directory.

4.5.2 Uploading analyzer settings

If you need to upload new settings to an analyzer, the analyzer settings file must be located in the storage location specified when creating the connection to the analyzer.

The default storage location is the user's home directory.

4.5.3 Communication Errors

If Serani Max cannot communicate with the analyzer, the following error message will be displayed:

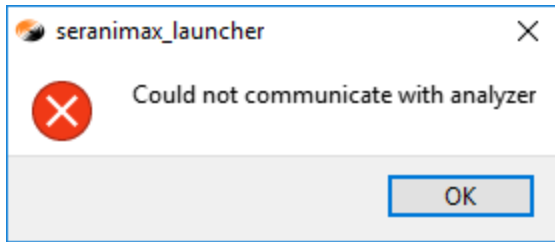


Figure 5: Error communicating with analyzer

4.5.4 License Validation Errors

If Serani Max cannot validate the license for the analyzer, the following error message will be displayed:

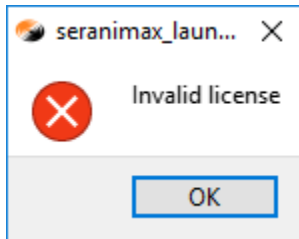


Figure 6: License validation error

